

UST21 continuously strives for excellence and distinctive value creation in remote sensing, marine surveys, marine forecasting, monitoring, and marine SI.



Customer Success



Advanced marine science and customer success with high-quality marine data

Responsibility



Committed responsibly from present to future challenges

Innovation



Opening new paths through cutting-edge technology and a spirit of challenge

Respect



Embracing diversity and accepting differences without prejudice

History

1999	2000	2004	2006	2008	2010	2016	2019	2020	2021	2024
Founded	Certified as MOF Startup	Certified as Engineering Company	Registered for Marine Survey	Registered for KHOA Hydrographic Survey	Registered for Marine Mapping	Registered for Construction Engineering	MOU with Fugro	Registered for Underwater Construction	Registered for Navigation Aids Management	Established Fugro-UST21

Service Items

Remote Sensing	Hydrographic Survey	Underwater Acoustics
Marine Data Analysis	Marine Observation & Survey	Geophysical Exploration
Unmanned Systems	Numerical Modeling	Hydrographic Survey

Address

H/Q	129, Gaetbeol-ro, Yeonsu-gu, Incheon
Office	2nd floor, 7-5, Jungang-daero 214beon-gil, Dong-gu, Busan



Marine Convergence Department

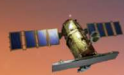
Specialized in preprocessing, analysis, and application of multi-source satellite imagery (SAR, optical, ocean color), offering customized services such as **object tracking, monitoring, change detection, and recognition based on big data and AI**

Geostationary Ocean/Meteorological Satellite (Ocean Color Sensor)

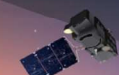


Himawari-8

Polar-Orbit Earth Observation Satellite (Optical/Radar/Hyperspectral Sensor)



Komsat-3/5



Sentinel-1/2/3

CubeSat Constellation for Earth Observation (Optical/Radar Sensor)



SkySat

Low-Altitude Remote Sensing Platform (Optical/Hyperspectral)



Monitoring



Station



Geo-Komsat 2A



Geo-Komsat 2B



Rapideye



Landsat-8/9



PlanetScope



ICEYE



CAS500-1/2



Worldview



Coastal Waters

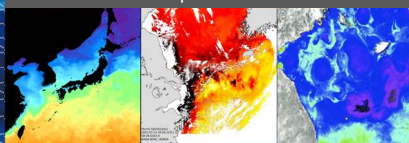


Vessel Detection



Tidal Flat Distribution

Open Sea

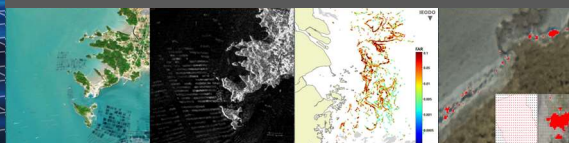


Sea Surface Temperature

Sea Surface Salinity

Chlorophyll-a

Coastal Waters

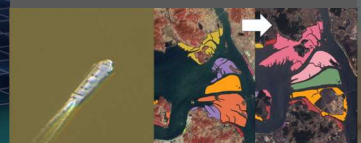


Submerged Potential Aquaculture Sites

Sargassum

Marine Debris

Ports and Coastal Land Areas



Vessel Detection

Tidal Flat Distribution

High-quality, customized marine information with remote sensing technology